



2024 Community Wildfire Protection Plan (CWPP)



The CWPP update is funded by
Washington's Climate Commitment Act

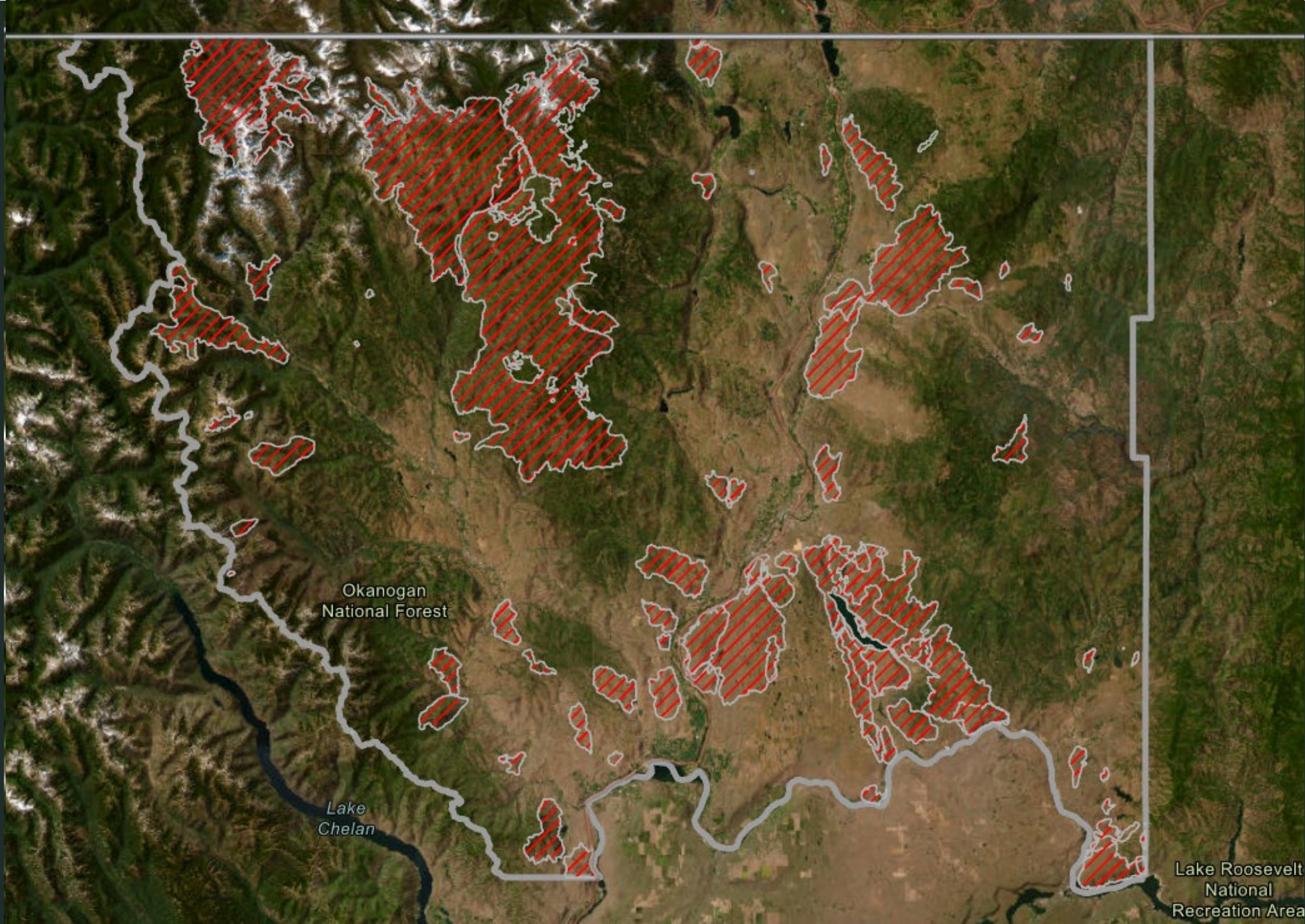


OK COUNTY ALERTS

Sign up, it's a must!

Scan the code or visit:

[www.okanogancounty.org/government/
emergency_management](http://www.okanogancounty.org/government/emergency_management)



Okanogan
National Forest

Lake
Chelan

Lake Roosevelt
National
Recreation Area

Healthy Forests Restoration Act of 2003

Collaboration

- Must include local governments, fire departments, and the state forest service
- Community input and cross-boundary collaboration is key.

Prioritized Fuel Reduction

- Must identify the highest priority locations for fuels treatments across the landscape
- Emphasis on cross-boundary treatments

Structural Ignitability

- Must address reducing structural ignitability
- Emphasis on individual responsibility of homeowners

What a CWPP Is

Collaborative community effort to determine, prioritize, and plan actions that protect life, property, and infrastructure from wildfire

A PLAN & A PROCESS

- A CWPP must include planned action items
- Action items should be SMART - specific, measurable, achievable, relevant, and time-bound

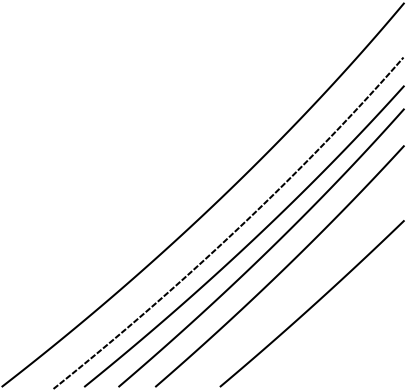


What a CWPP Is Not

NOT A LEGALLY BINDING DOCUMENT

- The CWPP does not require anyone to take action.
- The CWPP does not have legal recourse for failing to act on something in the plan.

NOT A FUNDING SOURCE

- The CWPP is not a source for funding.
 - The CWPP is not a checkbox.
- 



Community + Partner Engagement

Identification of stakeholders and partners:
core team development!

Assessing district and community capacity

Gathering community input

Ensuring diversity and representation

Parts of prioritization/implementation





Who is CWPP Partner?

- Community planners
- Tribal representatives
- Existing collaboratives and interest groups

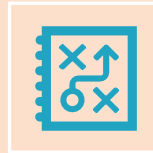


Survey questions

- Gauge community preparedness
- Determine critical areas for outreach and education
- Identify unique challenges (livestock, vulnerable populations)
- Create benchmarks for evaluating success



707 responses



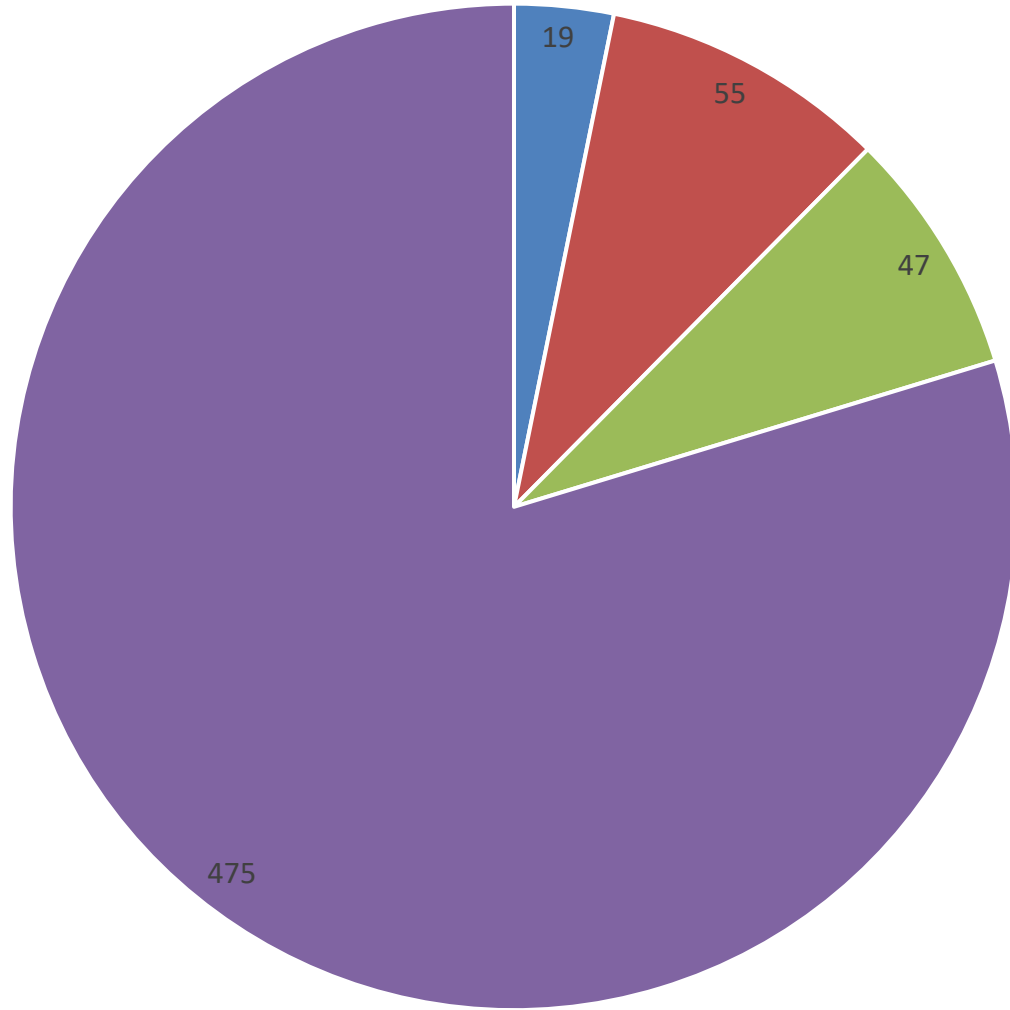
20% of respondents do not have evacuation plans



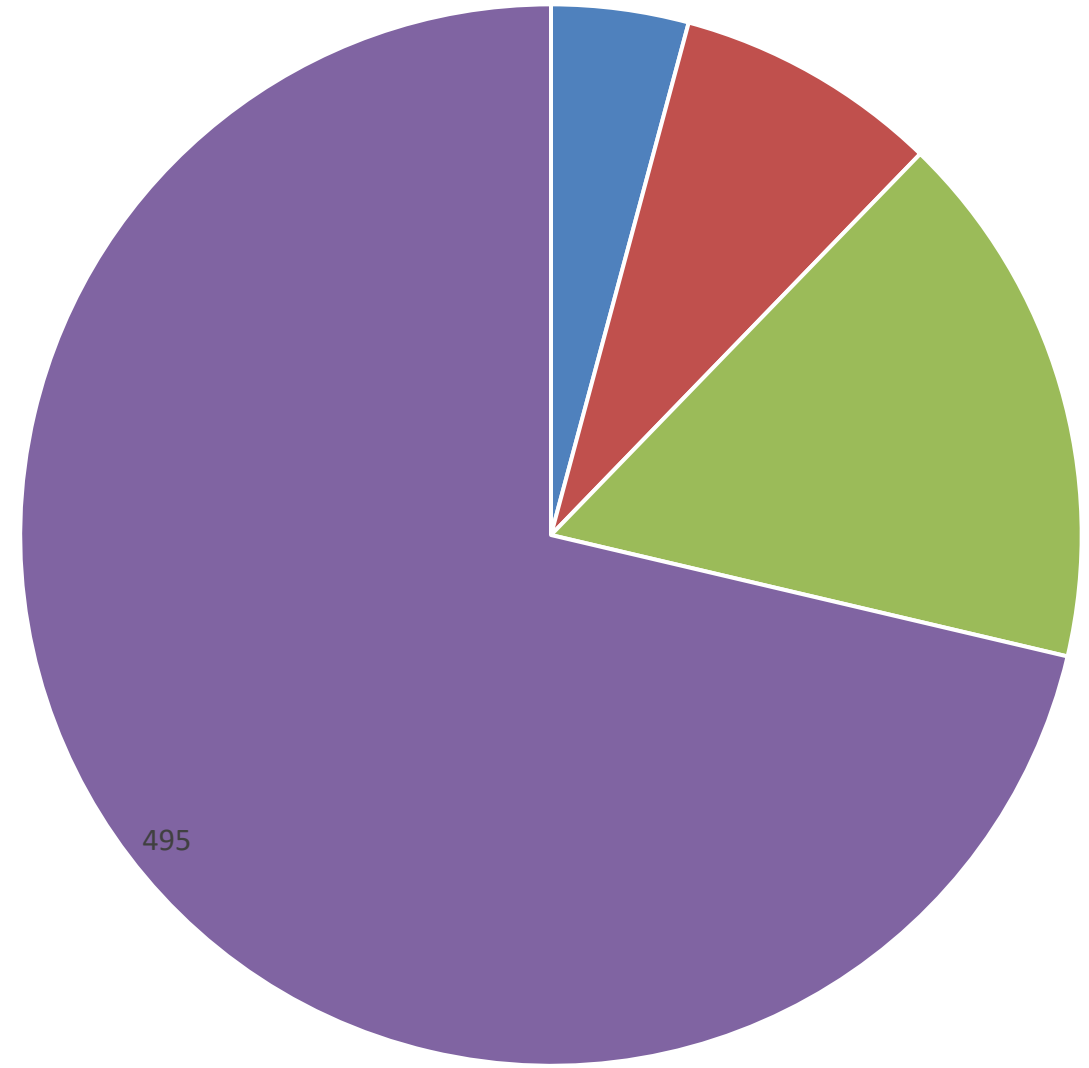
70% of respondents are full time residents



Receiving timely and accurate information about the incident.



Loss of insurance coverage due to wildfire risk.



RISK

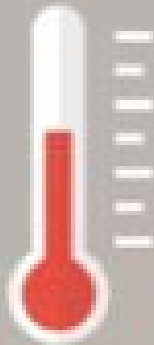
HAZARD

X

VULNERABILITY



LIKELIHOOD



INTENSITY



EXPOSURE



SUSCEPTIBILITY

Spatial Data:
fire behavior,
SVI, WUI,
and more

**Local
Knowledge:**
fuels,
community
values, past
projects

**Ideal
Outcomes:**
partner and
community
goals

Prioritization

**Recommended
Projects**

Short-term actions

- Can accomplish this year
- Can accomplish with current funding
- We have the capacity to accomplish with current personnel or volunteer base
- Existing relationships with emergency response partners and land managers.

Mid-term actions

- Can implement within 2 years
- Will require expanding personnel and/or volunteer base
- Requires new cooperative relationships with emergency response partners, land managers, and non-profit organizations
- Actions are already in the planning stages and have some portion of funding already available

Long-term actions

- Can start planning within 2 years so implementation can occur after next time
- Requires multi-year planning and funding
- Requires extensive grant funding
- Requires local staffing beyond volunteers



**COMMUNITY + PARTNER
ENGAGEMENT**

**HAZARD + RISK
ANALYSIS**

**PRIORITIZATION +
IMPLEMENTATION**

**DOCUMENT
GENERATION**

2024

Process
Timeline

JAN

Partner kick-off meeting

FEB

Core planning sessions:

- Community engagement & fire/risk/hazard analysis

MARCH

Community engagement meetings:

- Tonasket, Okanogan, Nespalem, Winthrop, Pateros

APRIL

Core planning sessions cont.

- Prioritizing goals/values/capacity/action steps

MAY

JUNE

Final partner/community meeting:

- Review document, public comment, revisions, and approve

Thank you!

CWPP Questions & Feedback

Eli Loftis –
eli@okanogancd.org
509-429-3453



Media & Outreach

Emmy Engle –
emmy@okanogancd.org



GIS Data & Mapping

Dylan Streeter –
dylan@okanogancd.org

